

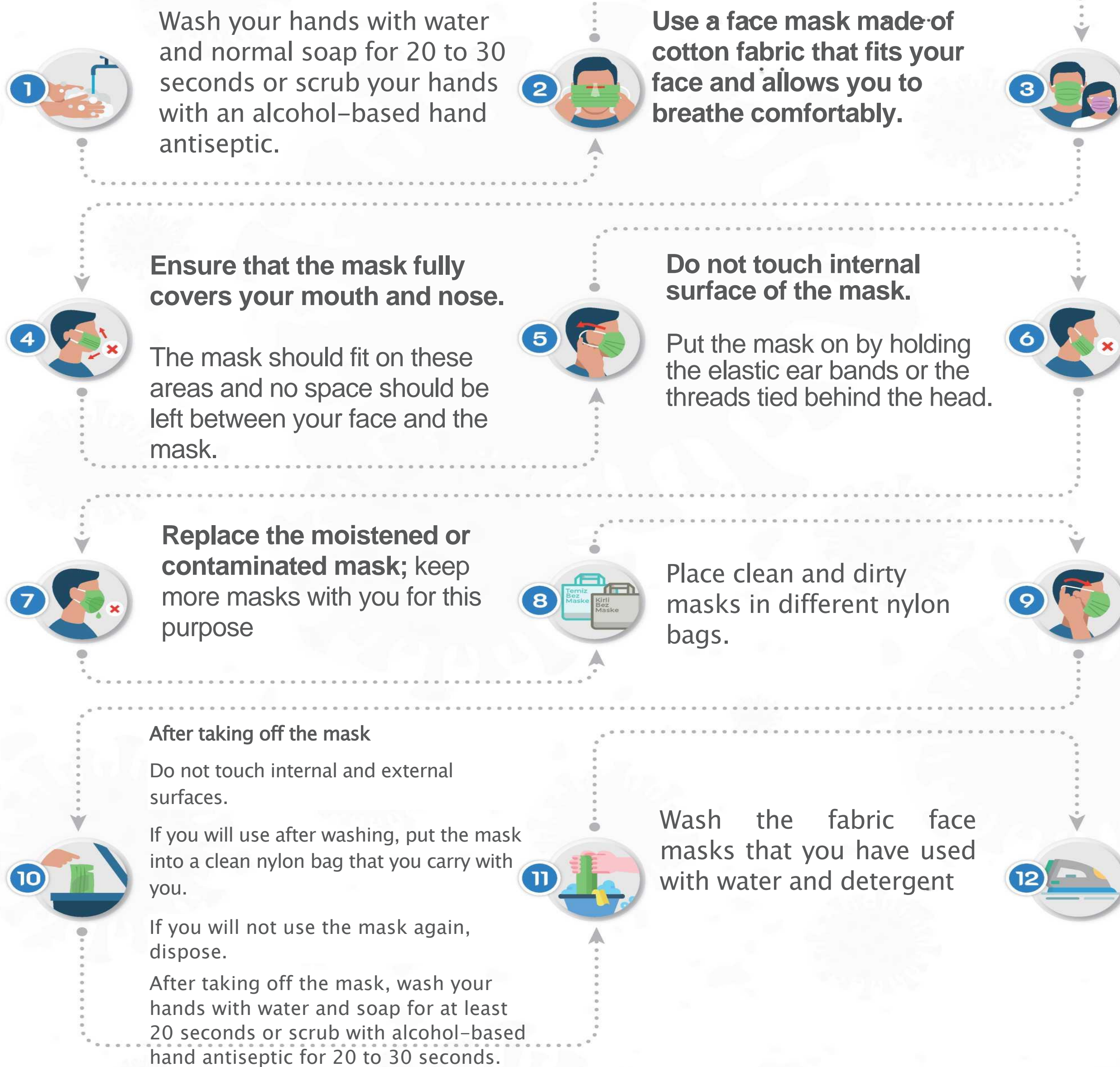
# USE OF FABRIC FACE MASK IN THE SOCIETY



**THE MASK SHOULD BE PERSONAL.**

**EACH INDIVIDUAL SHOULD USE HER/HIS MASK ONLY.**

**The essential issue to be protected from COVID-19 is SOCIAL DISTANCING (3 TO 4 STEPS) and HAND SANITATION**



Use a suitable mask that fits to the face of your children.

**CAUTION:** The fabric mask should not be used for the children under the age of 2 years, the individuals with respiratory distress, unconscious individuals and those who have obstacle to put the mask on and take off.

Never use the mask by placing below the chin or on your head.

Take the mask off by avoiding touching the anterior surface of the mask which covers the nose, mouth and chin, and where intense exposure appears; holding from the ear bands. Do not contact with mouth, nose or eye.

Allow the mask to dry after washing, iron at high temperature and non-vaporized mode before use.



**WASH THE FABRIC FACE MASKS WITH WATER AND DETERGENT AFTER TAKING OFF. DO NOT USE THE FABRIC FACE MASK AGAIN BEFORE WASHING.**



**Ministry of Health of Turkey**



**/SaglikBakanligi**